



NuFlo USB Adapter Installation

The NuFlo™ USB communications port allows a user to configure and download data from a Scanner 2000 or Scanner 2200 to a computer using a standard USB connection. The USB adapter software supplied on the ModWorX Pro installation CD shipped with every Scanner must be installed to support USB communications.

This document guides the user through the installation process (see Part I – Install the Driver, and Part II – Run the “Found New Hardware” Wizard) and explains how to connect to the Scanner using the USB adapter and the ModWorX Pro interface (see Part III – Connect to the Scanner). Part II is required for Windows XP users only.

When the USB adapter is pre-installed at the factory, no additional field wiring is required. However, a USB adapter may be purchased as a kit for installation in a previously acquired **Scanner 2000**. See the NuFlo™ USB Adapter Kit Installation Guide for instructions on installation and wiring. (A printed installation guide is shipped with all USB adapter kits, and an [electronic version](#) of the guide is available on the USB installation CD supplied with the kit.)

Equipment Required

To install the USB adapter driver and software, the following items are required:

- a user-supplied Universal Serial Bus (USB) A/B cable for connecting the computer to the adapter
- the ModWorX Pro installation CD, which contains the NuFlo USB Adapter software

Part I—Install the Driver

IMPORTANT: Do not connect the USB adapter to a computer or to a Scanner until instructed to do so. Only the ModWorX Pro installation CD is required for Part I of the installation procedure.

1. Insert the ModWorX Pro installation CD in the CD-ROM drive of your computer.

a. Windows Vista/7/8 Users

Start Windows Explorer, browse the CD drive (or where setup files were unzipped) for the install file (.exe).

For 64-bit systems, look for:

Install\WinRoot\NuFlo\ModWorX Pro X.X.X\NuFlo USB Driver\NuFloUSBAdapterInstaller_x64.exe

For 32-bit systems, look for:

Install\WinRoot\NuFlo\ModWorX Pro X.X.X\NuFlo USB Driver\NuFloUSBAdapterInstaller_x86.exe

Right click the .exe file and select 'Run as Administrator' to begin installation.

Go to step 3.

b. Windows XP Users (Internet Explorer Required)

Click the appropriate “Install Device Driver” shortcut button below. If you are unsure of which driver to install refer to this link:

<http://support.microsoft.com/kb/827218>

Install 32-bit Driver

Install 64-bit Driver

c. **Windows XP Users (Other Browsers)**

Start Windows Explorer, browse the CD drive (or where setup files were unzipped) for the install file (.exe).

For 64-bit systems, look for:

Install\WinRoot\NuFlo\ModWorX Pro X.X.X\NuFlo USB Driver\NuFloUSBAdapterInstaller_x64.exe

For 32-bit systems, look for:

Install\WinRoot\NuFlo\ModWorX Pro X.X.X\NuFlo USB Driver\NuFloUSBAdapterInstaller_x86.exe

Double-click the .exe file to begin installation.

Go to step 3.

2. (Windows XP Users Only) A File Download dialog will appear. Click "Run."



3. At the "publisher could not be verified" prompt, click "Run" again.



4. Note the default installation location. If you wish to change the location, click "Change Install Location..." and map a new location. Click "Install." The application will search your operating system to determine which drivers to install.



5. If running the application on Windows XP, a Software Installation dialog box will appear. Click "Continue Anyway" to complete the installation.



6. A final “Success” window will confirm the installation of the USB driver.



Part II—Run the “Found New Hardware” Wizard (Windows XP users only)

1. Connect the USB adapter to the laptop using a universal serial bus USB A/B cable (user supplied). A Found New Hardware pop-up window will appear momentarily at the bottom of the computer screen, and the Found New Hardware Wizard dialog will appear.

Click “Yes, this time only.” Then click Next.



2. Click “Install the software automatically (Recommended).” Then click Next.



3. Windows will search for software for the USB adapter.



4. When the Hardware Installation warning dialog appears, click "Continue Anyway" to proceed.



5. Windows will automatically install the NuFlo USB software using files supplied on the CD.



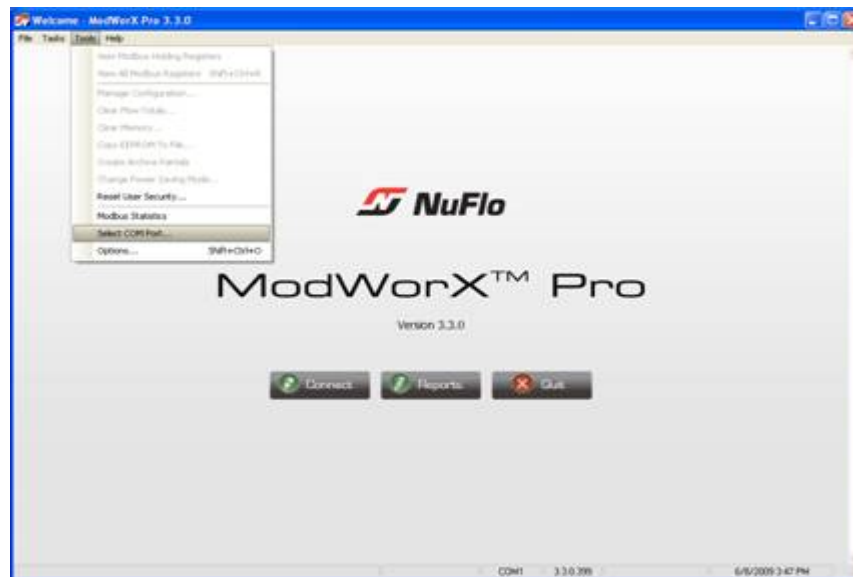
6. Click "Finish" to close the installation confirmation screen.



Part III—Connect to the Scanner

IMPORTANT: Before attempting a USB connection, verify that the ModWorX™ Pro software is installed on the computer to be connected to the Scanner and verify that the USB adapter is properly wired to a COM port on the Scanner circuit board.

1. Connect the USB A/B cable to the USB Communications Port of the Scanner. (The other end should be connected to the computer on which ModWorX™ Pro is installed.)
2. Start ModWorX Pro.
3. Select the Tools menu near the top of the Welcome screen, and click “Select COM Port...”



4. Select the "NuFlo USB Adapter" port selection and click "OK".



Note: If the ModWorX Pro software installed on your computer is version 3.2.0 or older, the text "NuFlo USB Adapter" will not appear. However, the USB port will appear, typically as the last selection in the list of available serial ports.

5. Press "Connect" from the ModWorX™ Pro welcome screen to initiate a connection to the Scanner.